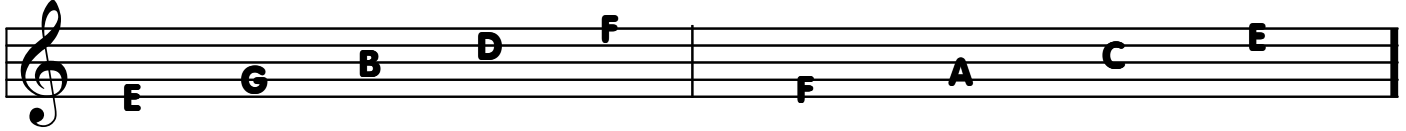


How to Read Music

Music is written on a STAFF, which has 5 lines and 4 spaces.



This sign is called a **TREBLE CLEF** ("G clef").

NOTES & RESTS



MEASURES / "BARS"



TIME SIGNATURES

The top number tells you the number of beats in each measure.
The bottom number tells you what kind of note gets one beat. ($\frac{1}{4}$ note).

Examples:



The 1st String

Musical notation for the first string. It shows three notes: E (open), F (1st fret), and G (3rd fret). Below each note are instructions: "Open No finger" for E, "1st fret 1st finger" for F, and "3rd fret 3rd finger" for G.

MAKE SOME NOISE

Musical notation for "MAKE SOME NOISE". It consists of two staves. The first staff shows a sequence of notes: E (open), F (1st fret), G (3rd fret), E (open), F (1st fret), G (3rd fret), E (open). The second staff shows a sequence of notes: G (3rd fret), E (open), F (1st fret), E (open).

MAKE SOME SOUND

Musical notation for "MAKE SOME SOUND". It consists of three staves. The first staff shows a sequence of notes: E (open), F (1st fret), G (3rd fret), E (open), F (1st fret), G (3rd fret), E (open). The second staff shows a sequence of notes: G (3rd fret), E (open), F (1st fret), E (open), F (1st fret), G (3rd fret), E (open). The third staff shows a sequence of notes: E (open), F (1st fret), G (3rd fret), E (open), F (1st fret), G (3rd fret), E (open).

MAKE SOME MUSIC

